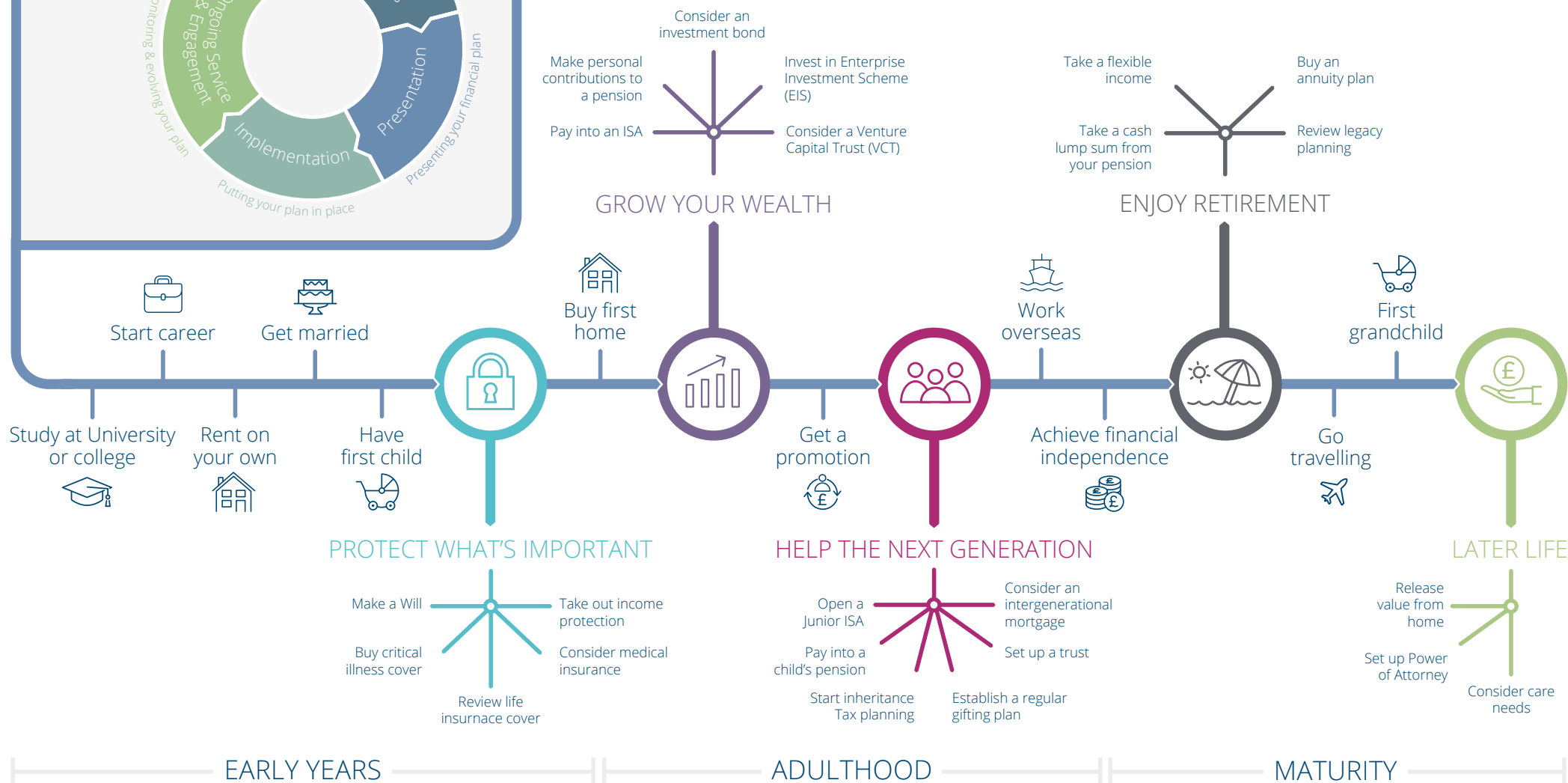
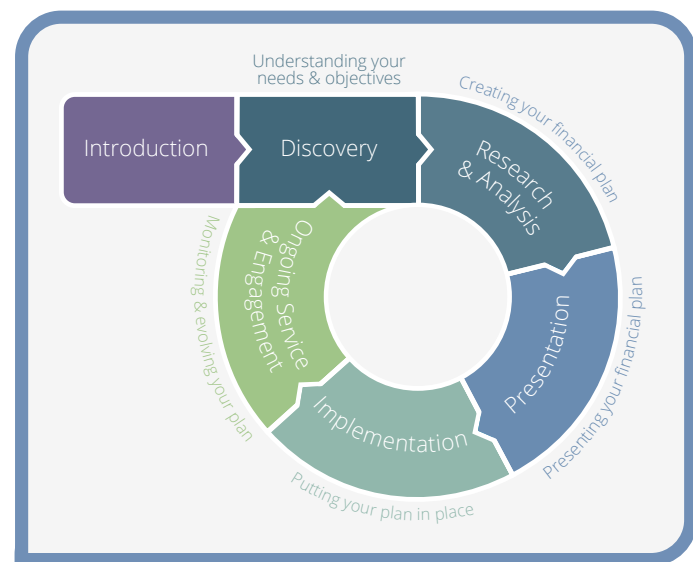


# YOUR JOURNEY AS AN ASPIRA CLIENT



## RISK WARNINGS

Your home may be repossessed if you do not keep up repayments on your mortgage.

The value of an investment with Aspira will be directly linked to the performance of the funds invested and may fall as well as rise. You may get back less than the amount invested.

The value of any tax relief can change at any time and depends on individual circumstances.

Please note that VCTs/EISs are illiquid investments, subject to future and retrospective tax changes and as such are suitable only for experienced, sophisticated or high net worth investors who accept that they may get back significantly less than the original investment.

Advice relating to a Will involves the referral to a service that is separate and distinct to those offered by Aspira. Wills are not regulated by the Financial Conduct Authority.